



# SCHACHCLUB 1961 KÖNIG NIED E.V.

MITGLIED DES HESSISCHEN SCHACHVERBANDES

## Willi Ellenberger Memorial 2024

### WHEN?

Sunday  
May 5th 2024  
10:30 AM

### WHERE?

Saalbau Nied  
Niedwaldsaal  
Heinrich-Stahl-Straße 3  
65934 Frankfurt

### WHAT?

22nd Rapid Chess  
Open in Nied

9 Rounds  
Swiss System  
15 Minutes Time Control

#### Format

9 Rounds (Swiss System)

Time control: 15 minutes  
per player and game

Applicable are the FIDE rapid chess rules  
as of January 1st 2023

#### Admission until

May 5th 2024 (10:30 AM)

#### Admission fee

**Payment until April 26th 2024**

Adults: € 10,00

Youths: € 5,00

**Payment after April 26th 2024:**

Adults: € 12,00

Youths: € 7,00

Admitted as **youths** will be players born  
in **2006** or younger.

#### Bank details

Schachclub 1961 König Nied e.V.  
DE33 5006 1741 0000 2181 38

#### Prizes

1st Place: €150

2nd Place: €100

3rd Place: €60

Best Female: €25

Best Youth (\*): €25

Best Senior (\*\*): €25

Best Club Team (\*\*\*): €25

Rating Prize DWZ 1750 - 1999 €25

Rating Prize DWZ 1500 - 1749 €25

Rating Prize DWZ 1 - 1499 €25

Hort system for places 1 to 3.

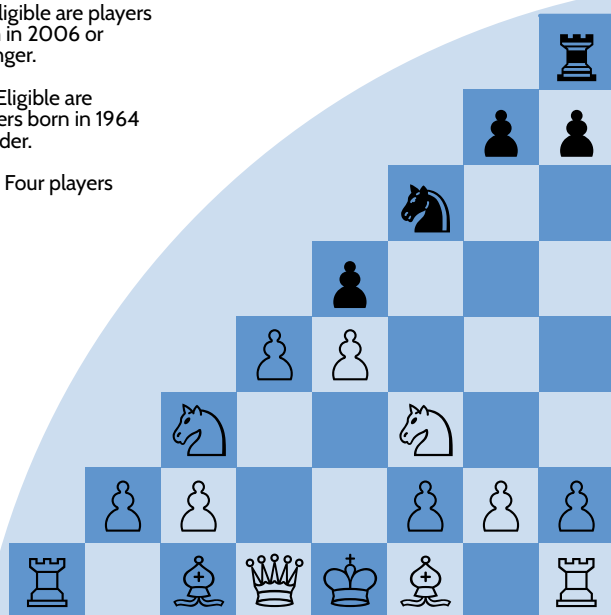
No double prizes.

Category prizes will only be awarded if the category consists of more than 3 participants.

(\*) Eligible are players born in 2006 or younger.

(\*\*) Eligible are players born in 1964 or older.

(\*\*\*) Four players



info@koenig-nied.de

<https://www.koenig-nied.de>